

Advisor

RELIABILITY SERVICES



Do You Have a Misguided Maintenance Strategy?

The Problem Plant

The average industrial plant faces constant challenges with machine downtime, skill gaps, limited insights into machine condition, and unexpected costs associated with maintenance.

These problems along with a lack of basic knowledge and skills leave many maintenance programs floundering with a misguided strategy for achieving even basic asset reliability.



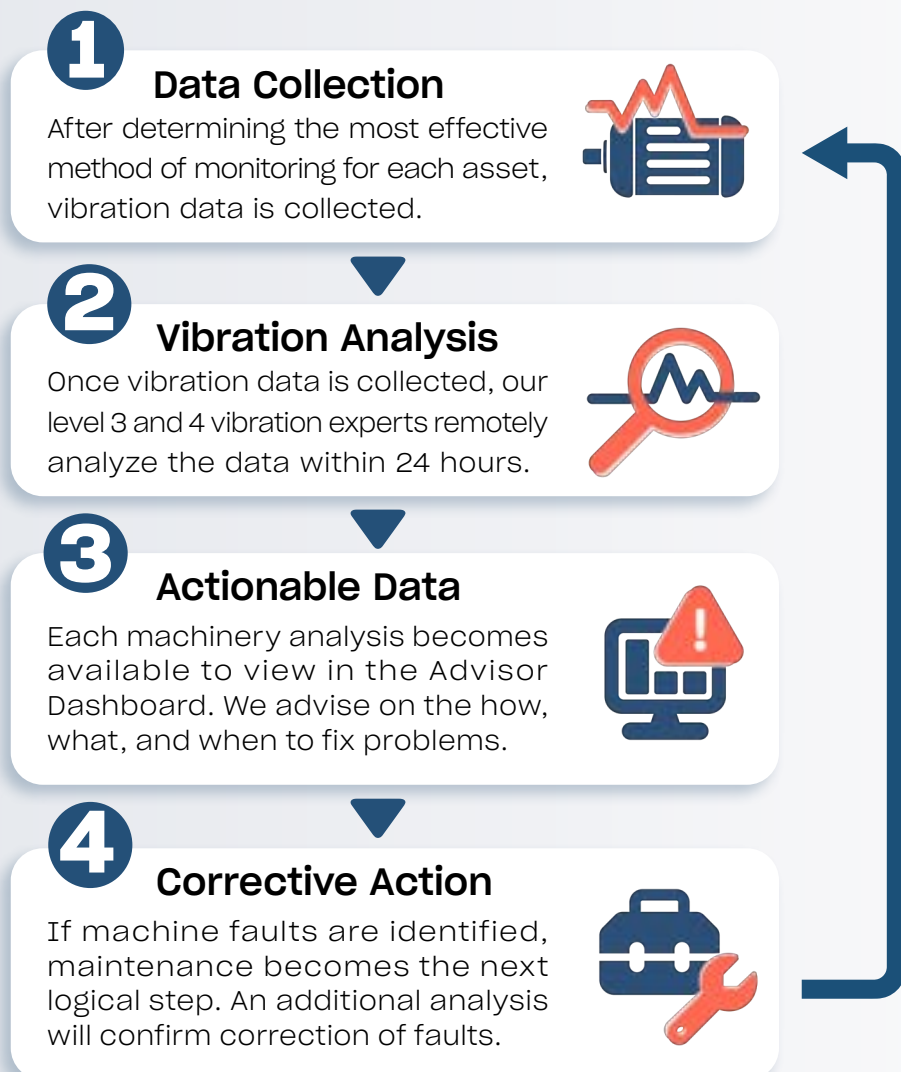
Meet **Advisor**

Advisor is a condition-based maintenance strategy that seamlessly integrates into an organization's maintenance program to increase asset integrity and availability.



How It Works

Upon receipt of a list of critical rotating assets from the client, our maintenance experts develop a custom-tailored plan to monitor the condition of their machines utilizing vibration analysis.



Engineer The Problems Out

Root Cause Failure Analysis

Beyond the resolution of current or immediate problems, utilizing historical data found within the Advisor program, our reliability experts identify possible candidates for **Root Cause Failure Analysis (RCFA)** and work with the client to eliminate repetitive and highly visible failures.

Additional Predictive Technologies

As the program matures and value is realized, Advisor allows for the seamless integration of additional predictive technologies such as **Oil Analysis**, **Motor Testing**, and **Thermography** to further increase the total reliability of the facility.



Advisor Dashboard



The Advisor Dashboard is a web-based data visualization tool for securely storing and managing a database of the client's rotating machinery. This is the place for:

- ✦ Receiving Actionable Data
- ✦ Overviewing the Health of All Assets
- ✦ Historical Data
- ✦ Prioritizing Maintenance

The Total Reliability Solution



Partner with Machinery & Reliability Experts

Benefit from our unrivaled expertise in maintenance, machinery, vibration, and reliability. We supply you with the insights to promote uptime.

Get 24/7 Support and On-Demand Guidance

Talk to us whenever you need a hand. Your assets run around the clock and so does our team of experts.



Utilize Multiple Methods of Data Collection

Capture vibration data through portable, wireless, and/or continuous methods. We'll determine the best options based on machine specific characteristics.

Implement a Sustainable CBM Program

Eliminate the guesswork in your maintenance program and allow your team to accomplish more through the support of actionable machine data.



Lower Life Cycle Costs

Cut costs associated with inefficient operations, asset maintenance, and replacement parts.

Increase Asset Integrity and Availability

Receive machine fault diagnostics and advice on the "how, what, and when" to fix each problem. The result? Assets that are healthy and running.



“

Advisor is a big benefit to our reliability program. By outsourcing analysis of vibration data we are able to take advantage of high level expertise that would otherwise would not be affordable to us.

”

- JOSE RABELL, MAINTENANCE SUPERVISOR



We Are **The Reliability Partner**

At Acoem, we understand that implementing a reliability program is not as simple as buying software or installing wireless sensors.

Improving reliability requires an in-depth understanding of organizational pains, rotating machinery, available resources, and integration of multiple maintenance strategies.

It's not easy to create a world-class maintenance program, but an Advisor can help.



About **acoem**

Creating environments of possibility

In today's fast-moving world, the environment is increasingly impacted.

The Acoem Group is committed to sustainable development and help companies and public authorities limit their environmental impact by offering products and services that:

- Prevent and control air, noise and vibration pollution;
- Increase the productivity and reliability of industrial machinery;
- Contribute to the development of effective, robust & noiseless products;
- Protect soldiers, sites and vehicles in military theaters of operation.

The Acoem Group is based in Limonest, France, and has 17 subsidiaries and offices around the world. The Group generates an annual turnover over €100 million and currently employs 750+ people globally.

acoem.com



Learn more about Advisor by visiting
acoem.us/advisor